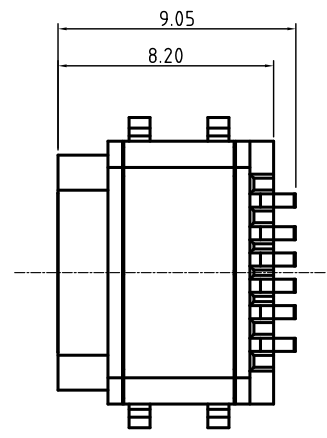
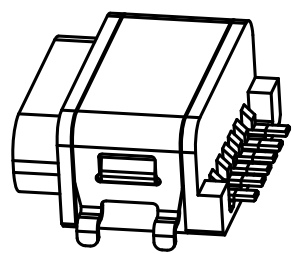
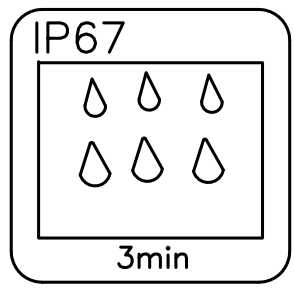


REV.	ECN. NO.	APPD.

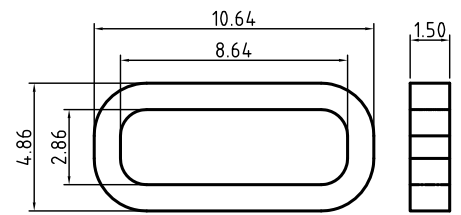
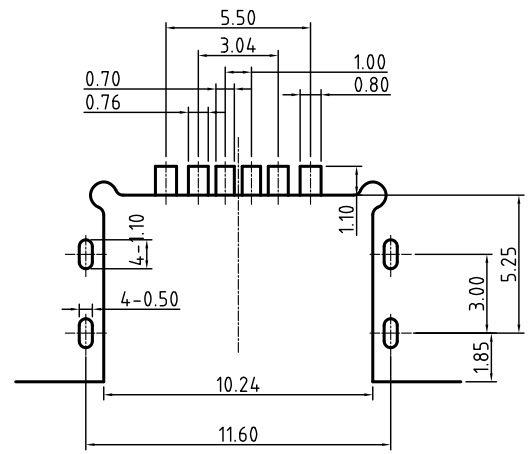
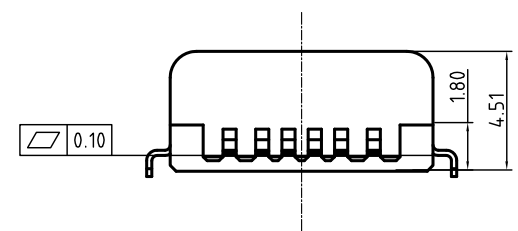
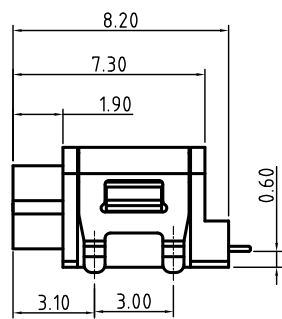
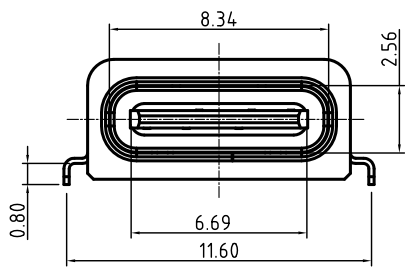


结构设计注意:

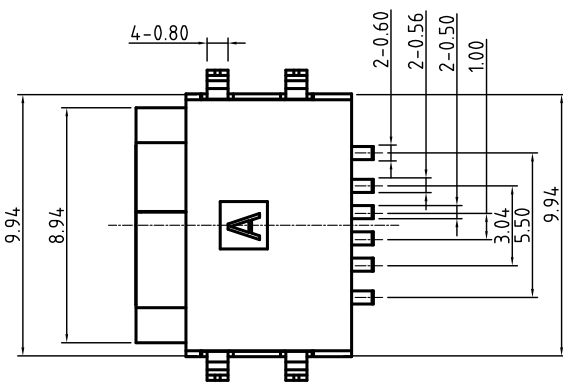
1. 成品使用时, 如有洗面奶泡沫、牙膏、洗手液、脏污液体, 请在TYPE-C口外面再设计一层外壳, 保护TYPE-C表面金手指不会被脏污覆盖。

SPECIFICATIONS:

- ELECTRICAL CHARACTERISTICS:
  - RATING: 3A;
  - CONTACT RESISTANCE: 30 mΩ MAX.(INITIAL);
  - DIELECTRIC WITHSTANDING: 100V AC MIN.;
  - INSULATION RESISTANCE: 100MΩ MIN.;
- DURABILITY: 10,000 CYCLES MIN.;
- INSERTION FORCE: 5-20N;
- EXTRACTION FORCE: 8-20N;
- WATER PROOFNESS: THIS PRODUCT IS BASED ON IPX7.
- PLUG INTERFACE DIMENSIONS COMFORM TO USB2.0 SPEC.
- PACKAGING: TAPE & REEL.



建议胶圈尺寸



3	Shell	1	SUS304R-1/2H Ni Plating T=0.30mm	
2	Contact	6	Phosphor bronze C519TR-EH Au/Ni Plating T=0.20mm	
1	Housing	1	PA10T (G.F30%)	
ITEM	PART NAME	Q' TY	FINISH	NOTE

A5	CC1	B12	GND
A9	VBUS	B9	VBUS
A12	GND	B5	CC2
PIN	SIGNAL NAME	PIN	SIGNAL NAME

X.	±0.50	X.°	± 2°
.X	±0.30	.X°	± 1°
.XX	±0.10	.XX°	± 0.5°
.XXX	±0.05		

UNITS: mm

**东莞市铭标电子科技有限公司**

PART NO. **USBC-0013IPX7-00**

TITLE: TYPE-C 6PIN板上四脚沉板防水母座

APPD: RADOM

CHKD: MARK

DR: Steven.Rao 2016/08/08

DWG NO.: **USBC-0013IPX7-00**

SCALE	SHEET	REV.
1/1	1/1	A1

Autodesk 教育版产品制作

Autodesk 教育版产品制作