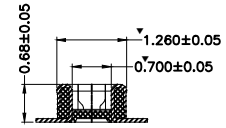
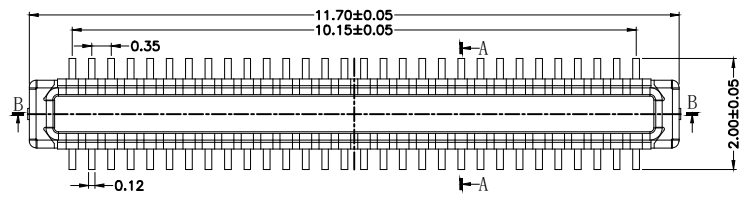
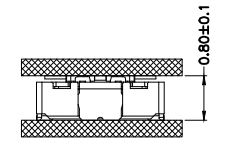


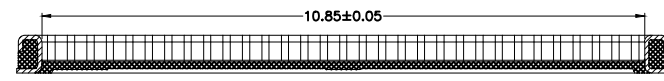
版本	变更日期	变更内容	责任人	备注



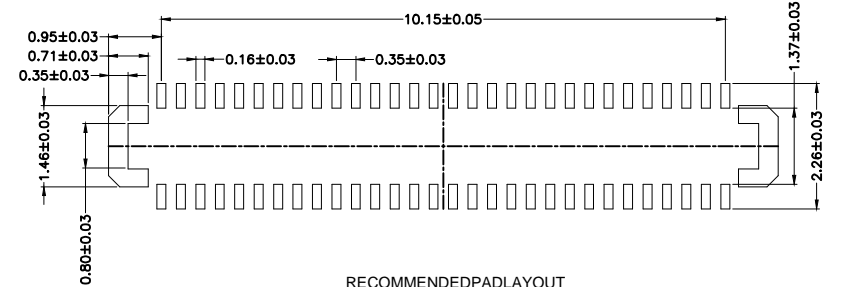
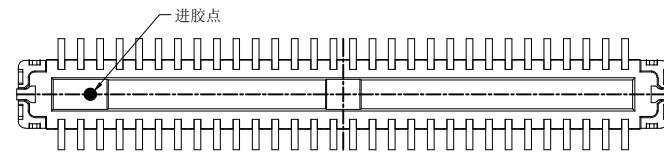
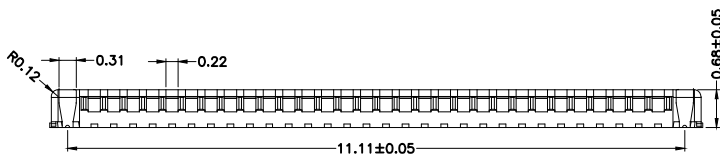
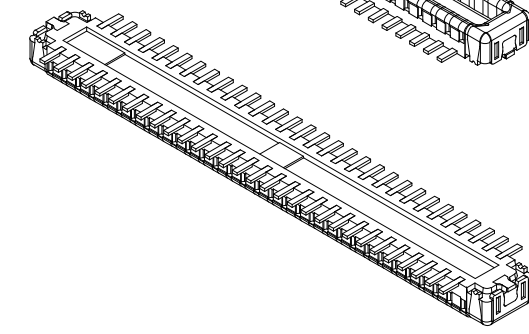
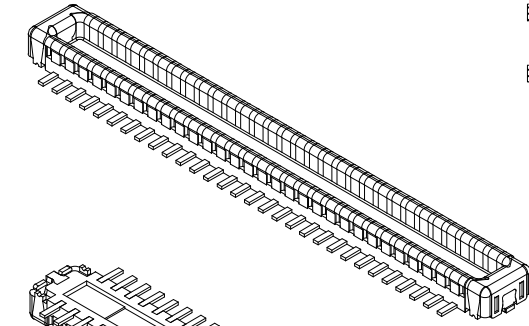
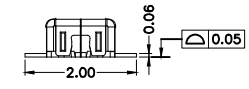
SECT. A-A



嵌合状态
MATING CONDITION



SECT. B-B



RECOMMENDED PAD LAYOUT
(FOR REFERENCE)

备注:

1. 塑胶材质: LCP UL 94V-0 BLACK;
2. 毛边最大0.03mm, 厚0.05mm;
3. 产品不可有明显的缩水, 烧焦, 发白, 缺胶, 端子包胶等问题;
4. 零件必须符合RoHS要求;
5. ▼符号为QIP管控尺寸;
6. 模穴号 (A, B, C.....);
7. 中转收料10K PCS/盘;
8. 产品几何中心位置不能设顶出位;
9. 端子接地片共面度在0.05mm以内, 正位度0.02mm以内;
10. 进胶口采用底部细水口进胶;

MIB-022M060



X,±	X°,±	UNITS mm	NAME (INTENDED USE)	东莞市铭标电子科技有限公司
.X± 0.05	.X°± 1°	MAT'L	PART NO. (INTENDED USE)	
.XX± 0.02	.XX°± 0.5°	N/A	APPD:	TITLE: 客户图
.XXX± 0.015	.XXX°±	FINISH	CHKD:	DWG NO: MIB-022M060
THE GENERATED DRAWING IS BY ACAD, PROE OR IDEAS. DO NOT CHANGE BY HAND.			Q'TY	DR:
			N/A	SCALE SHEET REV. 1:1 1/1 A