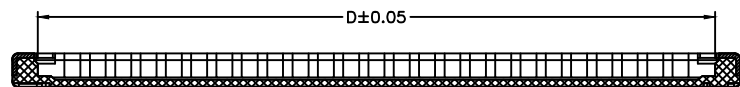
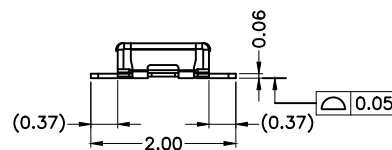
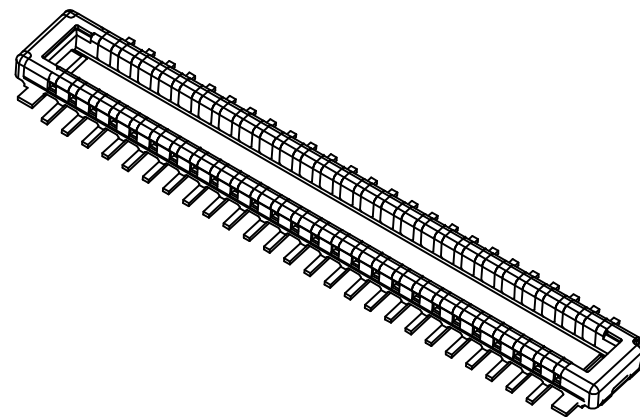
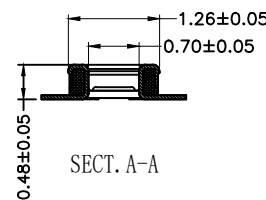
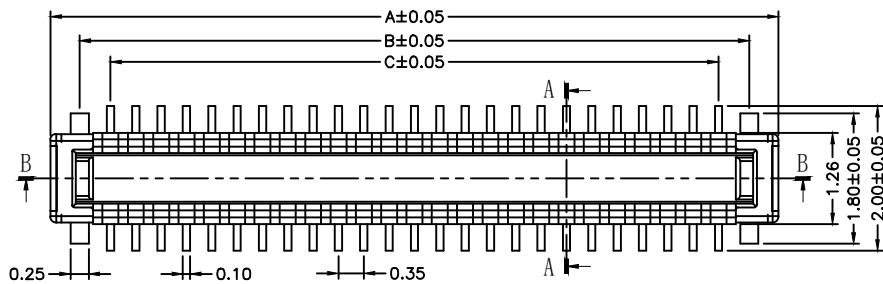
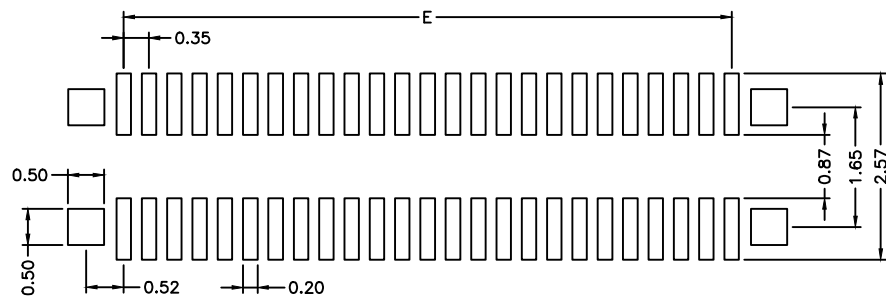


版本	变更日期	变更内容	责任人	备注
C	2023.08.18	扩pin	Liuzheng	



SECT. B-B



MOUNTING LAYOUT

仅供参考

PIN数	A	B	C	D	E
50	10.060	9.250	8.400	9.360	8.40
40	8.310	7.500	6.650	7.610	6.65
34	7.260	6.450	5.600	6.560	5.60
30	6.560	5.750	4.900	5.860	4.90
24	5.510	4.700	3.850	4.810	3.85

备注:

1. 塑胶材质: LCP E6808 UHF UL 94V-0 BLACK;
2. 毛边最大0.03mm, 厚0.05mm;
3. 产品不可有明显的缩水, 烧焦, 发白, 缺胶, 端子包胶等问题;
4. 零件必须符合RoHS要求;
5. ▼符号为QIP管控尺寸;
6. 模穴号 (A, B, C,.....);
7. 中转收料10K PCS/盘;
8. 产品几何中心位置不能设顶出位;
9. 端子接地片共面度在0.05mm以内, 正位度0.02mm以内;
10. 进胶口采用底部细水口进胶;

MIB-014MXXX-35



X,±	X°,±	UNITS mm	NAME<INTENDED USE>	东莞市铭标电子科技有限公司
.X± 0.05	.X°± 1°	MAT'L	PART NO.<INTENDED USE>	
.XX± 0.02	.XX°± 0.5°	N/A	APPD:	TITLE:
.XXX± 0.015	.XXX°±	FINISH	CHKD:	DWG NO:
THE GENERATED DRAWING IS BY ACAD, PROE OR IDEAS.DO NOT CHANGE BY HAND.			DR:	MIB-014MXXX
			Q'TY N/A	SCALE SHEET REV.
				1:1 1/1 C